



Stillington Primary School

Weekly bulletin **Friday 27th March 2026**



Good morning everyone,

It has been an incredibly busy term in Spring! Pupils have worked so incredibly hard to deepen their knowledge and understanding across all of the curriculum areas. We are so proud of all that the children have achieved, and we look forward to the summer term for even more fun and learning!

House Point winners

We are delighted to share that the winning house for this half term is Atinuke. The pupils in the winning house will receive a non-school uniform day on the first Friday back after the Easter holidays. Teachers/pupils will write in their planner if they are in the winning house.

Have a wonderful and well-rested Easter holidays and we look forward to seeing you when we return on Tuesday 14th April.

Thanks,
Miss Tordoff
Head of School



**Stillington Community
Primary School**



**Terrington Church of
England VA Primary School**

Wow Class work



EYFS and Year 1 & 2 – Miss Allwood

Year 1 have now finished their unit on measuring, exploring length, height, mass and capacity. They have really enjoyed lots of practical activities, comparing and measuring objects using a range of resources.

In EYFS, the children have been busy measuring themselves and tracking the growth of their sunflowers that they planted. It has been lovely to see their excitement as they observe changes over time and begin to compare heights.

PSHE - Keeping ourselves safe.

This half term, our PSHE learning focuses on keeping safe both online and in everyday life.

In Years 1 and 2, children are learning how age restrictions help keep them safe and the basics of online safety, including not sharing personal information and telling a trusted adult if something makes them feel worried or uncomfortable. We will also be revisiting the clever never goes rule with the children as a way of keeping safe.

In Years 3 and 4, children are learning what drugs are in an age-appropriate way, including that some are medicines that help us when used correctly. We are also exploring safe use, the risks of misuse, and the importance of speaking to a trusted adult if they are concerned.

In Years 5 and 6, children are developing their understanding of online safety by learning how to protect personal information. They are also learning about the risks and effects of drugs, the laws around them, and where to access support, including organisations such as Childline.

Across all year groups, we continue to emphasise the importance of talking to a trusted adult and asking for help when needed.



Y3,4,5,6 – Miss Jackson

This Week in Key Stage 2, in English we have been finishing off our police reports based on the story 'The London Eye Mystery', which have been brilliant. In Maths, we have been finishing some topics and continuing to work on our times tables.

In our foundation subjects we have been finishing our learning for this half term and completing our end of unit quiz. In Art, that meant creating our collages, in Music that meant creating a final piece of music, in French that meant being able to create a complex sentence and write it in French.

The children have worked really hard this half term and definitely deserve a well needed break. Have a lovely Easter Holiday, and I look forward to welcoming my class back in the Summer Term.

Parent News

Malton Sports Centre KS2 event

On Wednesday 15th April, the children in KS2 (Years 3, 4, 5, and 6) will be taking part in a Basketball, Handball, Netball event at Malton Sports Centre. The children are asked to come into school in their uniform and will get changed at school into their school PE kits, trainers to be worn. Children will also need to be wearing their school jumpers. They will have lunch at school as normal.

A member of staff will accompany the children on a bus, which will take them to Malton in the afternoon. The children should arrive back in time for the end of the school day.

KS2 York Castle Museum Trip

On **Thursday 30th April**, the KS2 children will be visiting York Castle Museum as part of our history curriculum.

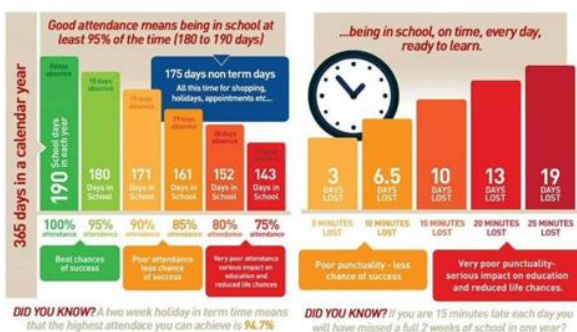
The bus will depart from school at 9:15am. Please ensure your child arrives at school by 9:00am to support a prompt departure. We will return to school before the end of the normal school day. Children will need a packed lunch and a water bottle. If you would like to order a school packed lunch, please email the school office with your choice of ham, cheese or tuna sandwiches before Wednesday 15th April.

Children should wear full school uniform and bring a waterproof coat, as we will be walking to and from the bus. To help cover the cost of the bus, we would appreciate a voluntary contribution of £5.50 per child, which can be paid via Arbor. Thank you for your continued support.

Attendance

Please note that the school gates/doors are open from 8:45am until 9am and we kindly ask that children are dropped off in this time. The gates/doors will be closed at 9am, please be aware children arriving late after the register has closed will be marked as unauthorised for the morning. Arriving late for some children can be stressful and often means they have missed instructions for the morning activity. Please note we have breakfast clubs at our schools starting from 8am, should you wish to enquire about these, please speak to our school office staff.

As a school we aim for 95% attendance from all our pupils. We realise this is not always possible when your child is poorly. We are sure you will agree we all want our children to succeed, and good attendance is proven to give children the maximum learning time possible. Your child's attendance can now be monitored via the Arbor App.



Our Whole School Attendance is:

91.9%

Urgent Safety Concerns - Vehicle Movement and Parking During Drop-off/Pick-up

Recently, we have had reports of dangerous driving, near misses and irresponsible parking in the immediate vicinity of the school.

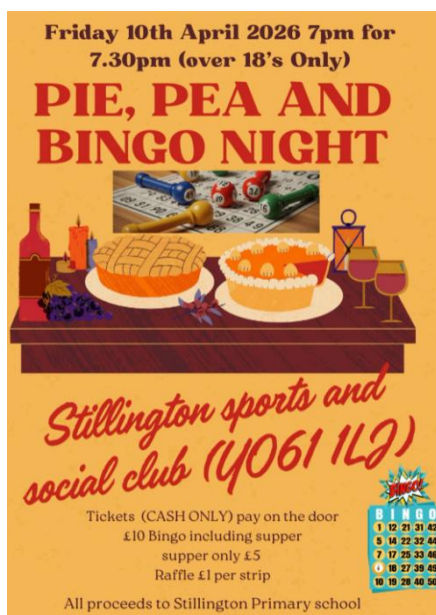
The safety of our students is our top priority and unfortunately, the volume of traffic and parking at peak times is putting them at risk.

We ask all parents and carers to adhere to the following safety guidelines:

- **Do not park on yellow zig-zag lines or double yellow lines.** These areas must remain clear to ensure children can see oncoming traffic and be seen.
- **Drive slowly and with caution** around the school site, respecting pedestrians at all times.
- **Please be patient.** Allow extra time for your journey to avoid feeling rushed and parking illegally.

We understand that traffic around school can get busy, but inconsiderate parking—even for just a couple of minutes—can cause significant danger to our children.

Pie, Pea and Bingo Night



Friday 10th April 2026 7pm for
7.30pm (over 18's Only)

PIE, PEA AND BINGO NIGHT

Stillington sports and social club (Y061 1LJ)

Tickets (CASH ONLY) pay on the door
£10 Bingo including supper
supper only £5
Raffle £1 per strip

All proceeds to Stillington Primary school

BINGO
1 12 21 31 42
5 14 22 32 44
7 17 25 33 46
10 18 27 35 48
19 15 28 40 39

Jumble Sale



JUMBLE SALE

Saturday 9th May
2026
2-4pm
Entry fee 50p

Stillington sports & social Club
Stillington
Y061 1LJ

BRIC-A-BRAC, CLOTHING, TOYS,
CAKES, REFRESHMENTS,
RAFFLE, TOMBOLA AND MORE...

All proceeds to Stillington Primary School

Helmsley Art Centre



EASTER FAMILY FUN!

helmsley artscentre

WED 8 APR
Little Amélie

Darryl J Carrington PRESENTS
FAMILY SHOW
OUT OF THE BOX

THU 9 APR

MON 30 - TUE 31 MAR
WORKSHOPS

Easter Art Workshops
TOKYO SKETCH STUDIO
30th & 31st March

www.helmsleyarts.co.uk

What should I do if I am worried about a child?

If you believe that a child is in immediate danger from significant harm, dial 999 to report it to the Police.

How do I make a referral?

Referrals can be made via the universal referral form or following an Early Help Assessment. Both can be located on North Yorkshire Safeguarding Children Partnership website:

<https://www.safeguardingchildren.co.uk/professionals/forms-and-tools/>

Urgent referrals can be made via telephone to the Customer Resolution Centre on 0300 131 2 131 or alternatively call the NSPCC Helpline: 0800 800 5000 or email: help@NSPCC.org.uk

Dates for the Diary

End of term – Last day of school	Friday 27 th March
Start of term – First day back	Tuesday 14 th April